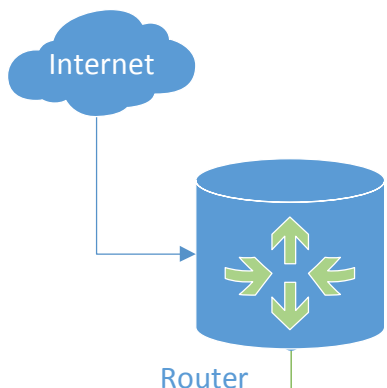


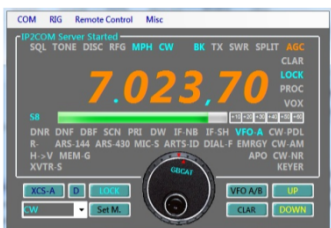
GBCAT – Computer Aided Transceiver RIG Remote Control Schema

GBCAT – Computer Aided Trainsceiver,
copyright 2012-2013 by Ivan Drzanic, 9A2GB
Support: www.9a2gb.net
Contact: emu.9a2gb@gmail.com



Router

TCP/IP Network



GBCAT – Computer Aided Trainsceiver



Local PC connected to TCP/IP network by wire or wireless.

GBCAT running on Local PC as IP2COM Server, connected to TCP/IP network by wire or by Wireless.

Multicast Audio Server running on Local PC, serve microphone audio to TCP/IP network. Audio Clinet running on Local PC, receive Multicast audio from Remote PC to the local speaker.

IP2COM, Audio Server, Audio Client and COM2IP Redirector are parts of GBCAT installation package.



Tablet with Multicast capable Audio Player may reproduce 2-way audio from RIG. Player is not a part of GBCAT installation package.

*Remote PC
Wireless TCP/IP Network



COM/USB Adapter



2-way Audio
Tigertronics Signalink SL 1+



Yaesu FT-857D
connected to PC
via USB/COM port



*Remote PC
Wired TCP/IP Network



COM/USB Adapter



2-way Audio
Tigertronics Signalink SL 1+



Yaesu FT-857D
connected to PC
via USB/COM port

*RIG Remote Control:

COM2IP Redirector running on Remote PC, redirect COM/USB traffic from RIG to TCP/IP network (no additional hardware required).

*2-way Audio:

Multicast Audio Server running on Remote PC, serve audio signal from RIG audio out to TCP/IP network. Audio Client running on Remote PC receive Multicast microphone audio from Local PC connected to TCP/IP network, by wire or Wireless.

Used hardware for 2-way NF Audio: Tigertronics Signalink SL 1+